



More Freshness & Less Waste in Every Shipment

Rehrig Pacific's crates and pallets are designed to protect dairy products throughout their entire journey. As a leader in the dairy industry supply chain, we bring over 100 years of experience in providing customized, innovative solutions that enhance efficiency, reduce costs, and ensure product safety.

Crafted from 100% recyclable, FDA-compliant materials and manufactured using high-pressure injection molding, our plastic milk crates and pallets offer superior strength and impact resistance. They feature exceptional stacking capabilities and smooth interiors to prevent product damage. Easy to sanitize, our products meet the rigorous hygiene standards of the dairy industry, preventing contamination. Furthermore, by being reusable, they significantly reduce waste and support sustainability.

Rehrig Pacific is committed to delivering quality, reliability, and innovation to the dairy industry, focusing on the safe and efficient transport of products while maintaining freshness and quality.

Features & Benefits



Reduces Damage

Our well-designed reusable plastic containers (RPC) support the weight of other containers above, not on the product itself, ensuring dairy arrives fresh and ready to sell.



Preserves Quality

Patented fluid retention channel design captures liquids during transit, providing a cleaner tray-pack for the consumer at retail.



Saves Labor

Ergonomically designed slide-stack feature facilitates ease in handling/stacking and ultimately labor savings at the DC and retail.

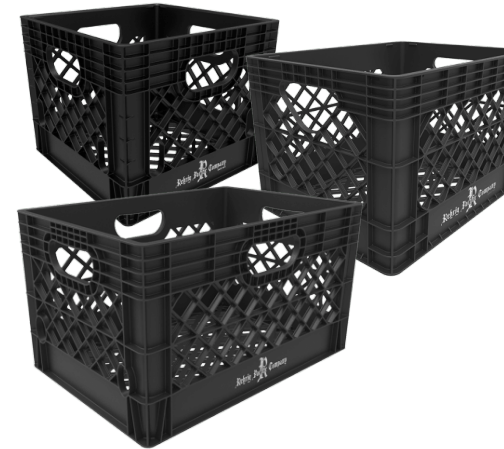


Reusable

Reduced packaging waste and elimination of disposal needs to increase support of sustainability goals.

Dairy Crates

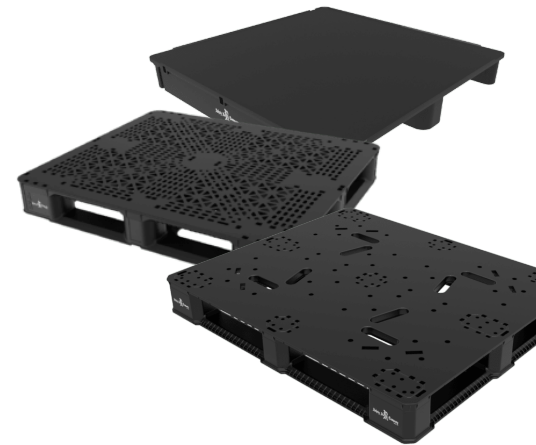
- Ergonomic handles allow easy handling
- Smooth internal faces to prevent damage to product
- Designed with exceptional stacking strength and stability
- Available in all-plastic or with steel rings
- Wide array of colors available; including FDA approved colors
- UV stabilizers, anti-oxidants, microbial and other additives available to extend the life of your investment
- RFID tags or barcode labels available to track crates and products
- Compatible with industry standard automation
- Universal design can be used for many SKU's - not just for use with milk bottles
- Open grid-work on all sides to allow for abundant airflow, temperature regulation, product protection, and easy cleaning
- Recessed base increase product clearance to prevent damage
- Regrind usage optimized to provide optimal strength and impact characteristics
- Branding areas on all 4 sides for customer specific branding - readily available for hot stamping and molded-in logos (pricing varies)
- Compatible with all other 24 qt. dairy crates and Specifications IN/LB MM/KG industry standard automation



Product No.	Internal Dim. L" x W" x H"	External Dim. L" x W" x H"	Weight lb.	Stack Increment (in.)	Qty Per 53' Trailer
16 Qt. Dairy Crate - PL Style	12 x 12 x 10.3	13 x 13 x 11	2.5	10.5	3,360
20 Qt. Dairy Crate	16.3 x 12.3 x 11.0	17.1 x 13.1 x 11.5	3.4	10.8	2,400
24 Qt. Dairy Crate	18.0 x 12.0 x 10.6	19.1 x 13.1 x 11.3	3.7	10.5	3,785

Dairy Pallets

- High-pressure injection molded plastic pallets made from UV stabilized high impact co-polymer
- PP resin that will not absorb moisture or bacteria. The non-porous, cleanable, solid deck makes this pallet an optimal solution for sanitary environments.
- Rehrig's 40 x 40 Pallet is designed for storage, handling, and shipping of dairy cases and products.
- Roughened top deck reduces slippage and helps keep loads in place while maximizing surface area.
- Design is ideal for stack loading, conveying systems, distribution, and cold storage.
- Both rugged and lightweight, the Rehrig Dairy Pallet is easier to handle than comparable wood or other plastic pallets.
- High-pressure injection molding allows Rehrig Pacific designers to strategically vary wall thickness to achieve lighter, yet stronger, plastic pallets when compared to other molding processes.



Product	Length (L)"	Width (W)"	Height (H)"	Overall Fork Pocket Width (W1)	Individual Fork Pocket Width (W2)	Fork Pocket Height (H1)	Weight	Static Load Rating	Dynamic Load Rating	53' Trailer Quantity
40 x 40 Wide Stringer Pallet	40	40	5	31.5	13.2	3.75	41	10,000	2,500	750
40 x 40 Narrow Stringer Pallet	40	40	5	34	14.5	3.75	42	10,000	2,500	750
40 x 48 Rackable Pallet	48	40	6.0	30	12	3.5	44.2	10,000	4,000	540
40 x 48 GMA Rackable 2800 Pallet	48	40	5.63	30	12.5	3.45	48.5	8,400	5,000	570