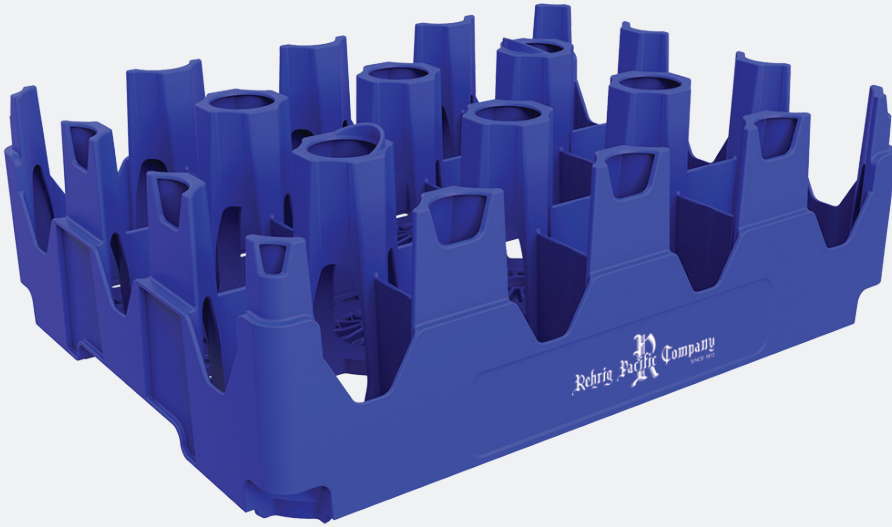
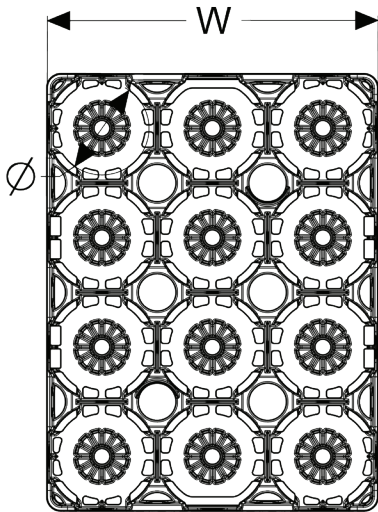


1.5L 12 Pack Castle Crate

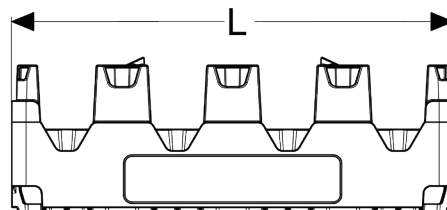
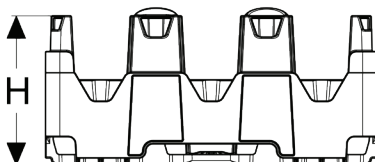


Specifications

- Ergonomic, sturdy handles for ease with grasping, lifting and carrying
- Twist 'n slide bottom locates and locks crates and closures for stability in transit, yet releases easily for unloading
- Customized color and branding available to promote brand equity and asset management
- Optional bar code, RFID and proximity marketing enablement
- Large brand panel for increased brand awareness
- Tall columns increase bottle's stability in transit
- Large display windows highlight labels, branding and bottle profiles
- Engineered high density polyethylene (HDPE) material for enhanced strength and durability
- Nested crates interlock for secure stacking in storage, return transit and unloading
- De-nest easily either manually or with automated de-nester
- Highly nestable to reduce space needed for empty storage



Specifications	IN/LB	MM/KG
Length (L)	15.4	391.16
Width (W)	11.55	293.37
Height (H)	5.25	133.35
Pocket Diameter (ø)	3.78	96.01
Nesting Increment	3.0	76.2
Weight	2.15	.0975



Corporate Headquarters
 4010 East 26th St., Los Angeles, CA 90058
 (800) 421-6244 • (323) 262-5145

Locations
 Los Angeles, CA • Orlando, FL • Atlanta, GA • De Soto, KS
 Erie, PA • Dallas, TX • Kenosha, WI • Quebec, Canada
 Querétaro, Qro., Mexico

Web: www.rehrigpacific.com



A FAMILY TRADITION OF GROWTH, SERVICE AND INNOVATION