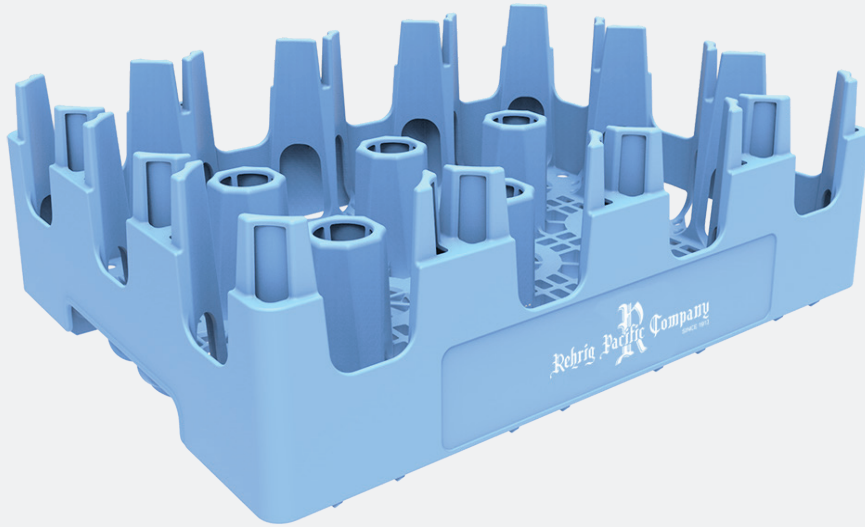


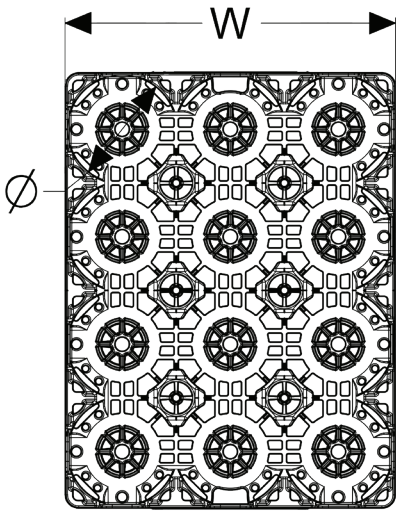


1L 12 Pack Castle Crate

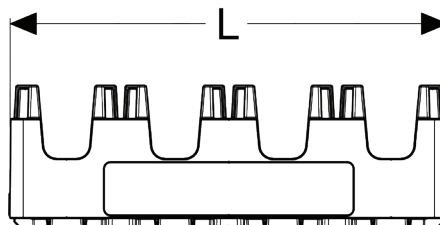
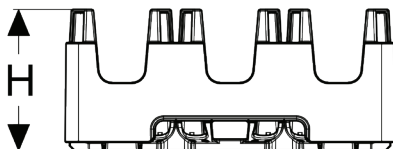


Specifications

- Ergonomic, sturdy handles for ease with grasping, lifting and carrying
- Twist 'n slide bottom locates and locks crates and closures for stability in transit, yet releases easily for unloading
- Highly nestable to reduce space needed for empty storage
- Nested crates interlock for secure stacking in storage, return transit and unloading
- De-nest easily either manually or with automated de-nester
- Customized color and branding available to promote brand equity and asset management
- Optional bar code, RFID and proximity marketing enablement
- Large brand panel for increased brand awareness
- Tall columns increase bottle's stability in transit
- Large display windows highlight labels, branding and bottle profiles
- Engineered high density polyethylene (HDPE) material for enhanced strength and durability



| Specifications | IN/LB | MM/KG |
|---------------------|--------|--------|
| Length (L) | 13.155 | 334.14 |
| Width (W) | 9.9 | 251.46 |
| Height (H) | 4.25 | 107.95 |
| Pocket Diameter (ø) | 3.25 | 82.55 |
| Nesting Increment | 3 | 76.20 |
| Weight | 1.38 | 0.626 |



Corporate Headquarters
 4010 East 26th St., Los Angeles, CA 90058
 (800) 421-6244 • (323) 262-5145

Locations
 Los Angeles, CA • Orlando, FL • Atlanta, GA • De Soto, KS
 Erie, PA • Dallas, TX • Kenosha, WI • Quebec, Canada
 Querétaro, Qro., Mexico

Web: www.rehrigpacific.com



A FAMILY TRADITION OF GROWTH, SERVICE AND INNOVATION