



60 Gallon Public Litter Container

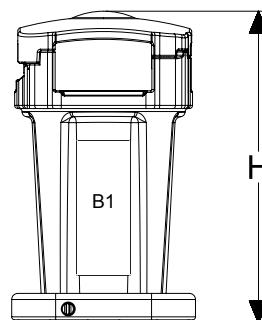
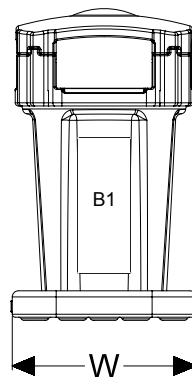
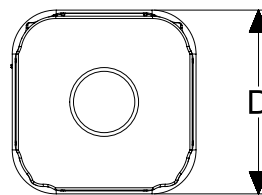


Features & Benefits

- Double wall construction in load bearing areas for increased strength and durability
- High impact polyethylene resin with anti-oxidants and UV stabilizers for long life indoors or in sunlight
- Choice of graffiti resistant easy-to-clean standard colors
- Container bodies are highly nestable for efficient shipping and storage
- Factory assembled lids save installation time and expense
- Weighted six-bolt base deters theft and provides a stable container platform
- Bolt locating guides aid base installation
- Large areas for logos and slogans on all four sides; Recessed branding and label areas protect graphics from wear
- Domed, 4-way entry lid provides easy access from all sides
- Wide opening hinged lid speeds collection
- Smooth interior prevents snagged or trapped materials when auto dumping
- 3-piece design allows replacement of parts as needed

Options

- Gravity lid lock restricts scavenging in upright position, but releases at 90 degrees of tilt when being dumped by automated lifters
- Choice of granite colors
- In-mold color labels available for logos and slogans
- Reusable injection molded 32 Gallon plastic liner available



Specifications	IN/LB	CM/KG
Capacity (Gallons / Liters)	60 Gal	227 L
Overall Depth (D)	28.5	72.4
Overall Width (W)	28.5	72.4
Overall Height with Lid (H)	47.5	120.7
Assembled Weight	64.0	29.0
53' Trailer Quantity	130	

Decoration Areas	WIDTH (IN)	HEIGHT (IN)
Side Brand - Hot Stamp (B1)	8.5	21.5

Corporate Headquarters
 4010 East 26th St., Los Angeles, CA 90058
 (800) 421-6244 • (323) 262-5145

Locations
 Los Angeles, CA • Orlando, FL • Atlanta, GA • De Soto, KS
 Erie, PA • Dallas, TX • Kenosha, WI • Quebec, Canada
 Querétaro, Qro., Mexico

Web: www.rehrigpacific.com



A FAMILY TRADITION OF GROWTH, SERVICE AND INNOVATION